



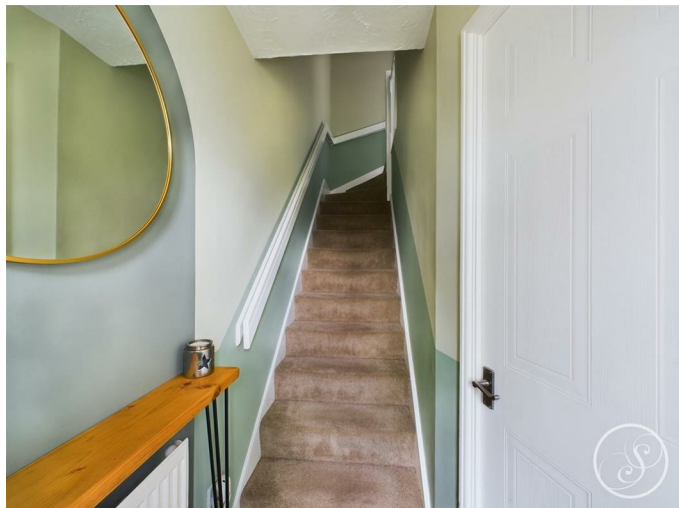
Stoneacre
Properties



Silkstone Court, Leeds, LS15 8TW
£230,000

Stoneacre Properties are delighted to offer for sale a two bedroom terrace situated in a cul-de-sac off The Ring Road in Crossgates. The property is situated close to local schools, shops and amenities including the Crossgates Train Station. The well presented property comprises: entrance hall, lounge, kitchen / diner. Stairs lead to the first floor accommodation comprising two bedrooms and house bathroom. Externally, the property features a garden to the rear and garage with up and over door.

Entrance



Door to front, stairs case leading to first floor, and a central heating radiator.

Lounge



Double glazed window to the front. Storage cupboard. Central heating radiator

Kitchen/Diner



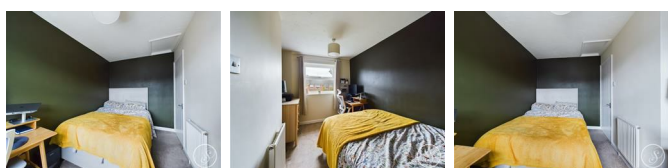
Fitted with a range of wall and floor units, integrated oven, four ring gas stove with cooker hood above. Plumbing for a washing machine. Space for a fridge/freezer. Double glazed window to the rear. Door to the rear leading to garden.

Bedroom One



Double glazed box window. Built in storage cupboards. Central heating radiator.

Bedroom Two



Double glazed window to the rear. Central heating radiator. Loft access.

Bathroom



Modern bathroom suite with wc, wash hand basin, bath with hand held shower above. Central heating radiator.

External



Driveway and garden to the front. To the rear is a lawned area and patio seating area.

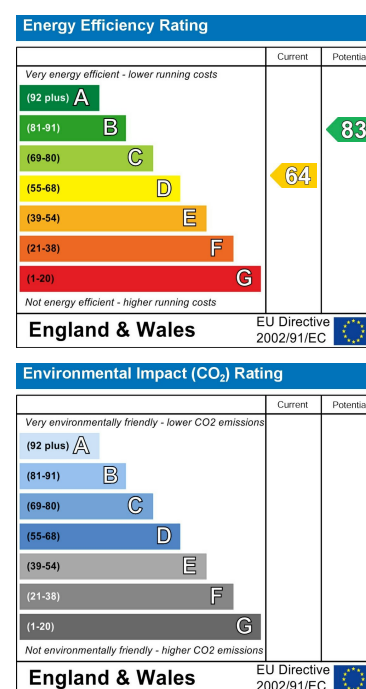
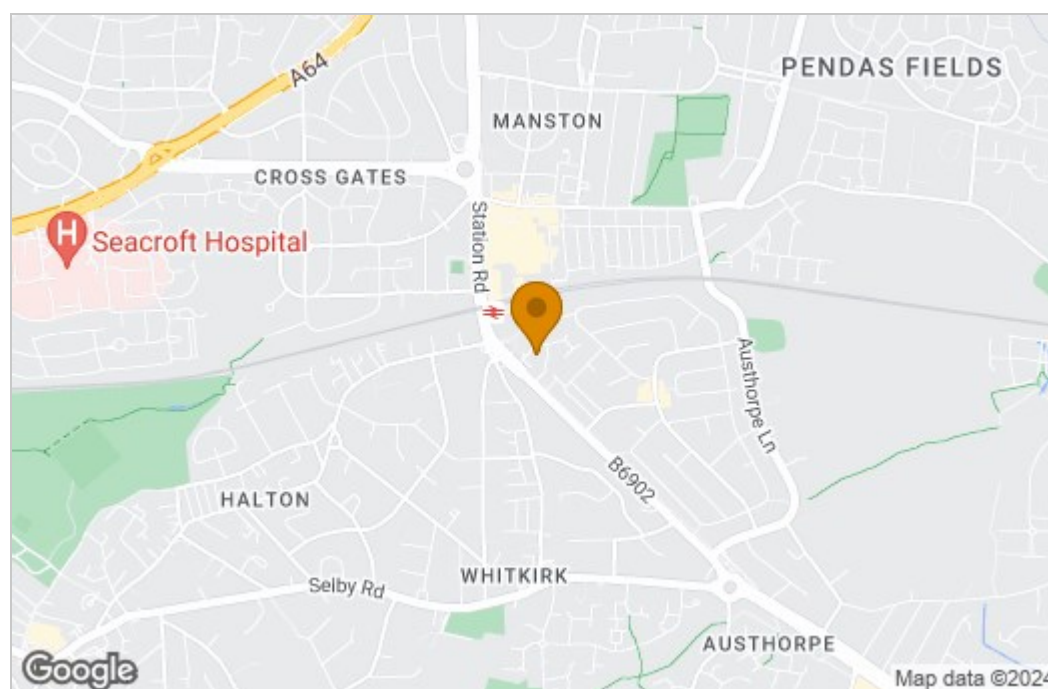
Garage

Up and over door. Power and lights. Door to rear.

Floor Plan



Area Map



These particulars, whilst believed to be accurate are set out as a general outline only for guidance and do not constitute any part of an offer or contract. Intending purchasers should not rely on them as statements of representation of fact, but must satisfy themselves by inspection or otherwise as to their accuracy. No person in this firm's employment has the authority to make or give any representation or warranty in respect of the property.

1 Colton Road, Leeds, West Yorkshire, LS15 9AA
Tel: 0113 260 9111 Email:
east@stoneacreproperties.co.uk <https://www.stoneacreproperties.co.uk>

Want to view properties first before they come on the market? Follow our Instagram @stoneacreproperties.

